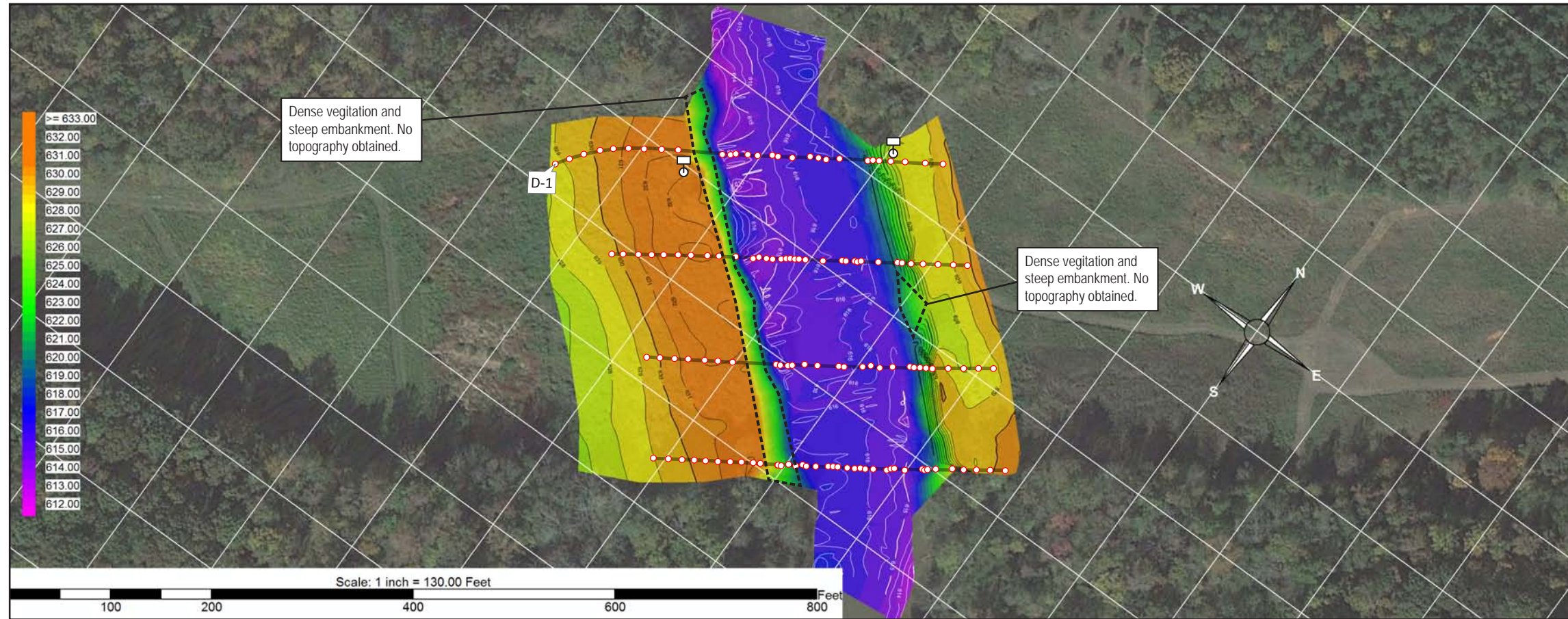


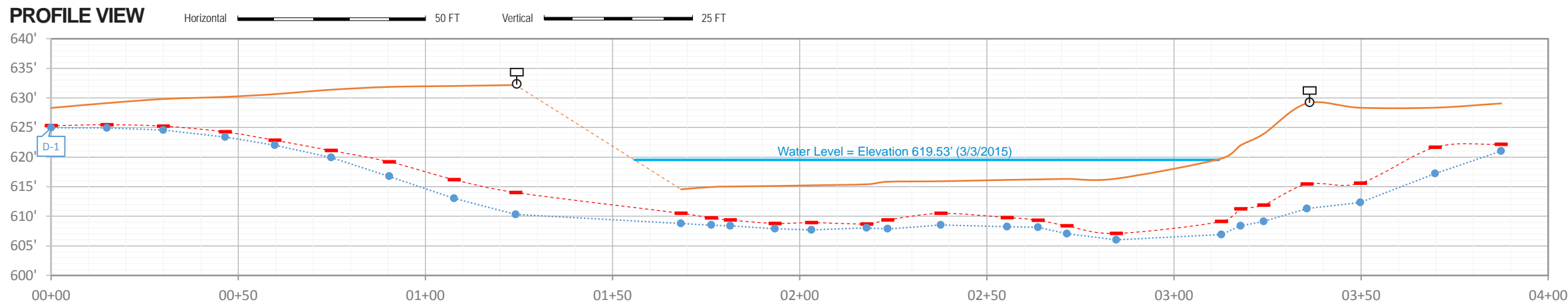
PLAN VIEW



DoC DATA

Pt. ID	STA#	East (ft)	North (ft)	Topo Elev. (ft)	T.O.P. Elev. (ft)	DoC (ft)	MS DoC* (ft)
D-1	00+00	XXXXXX.XX	XXXXXX.XX	628.31	624.95	3.37	3.00
D-2	00+15	XXXXXX.XX	XXXXXX.XX	629.13	624.94	4.19	3.66
D-3	00+30	XXXXXX.XX	XXXXXX.XX	629.82	624.58	5.24	4.58
D-4	00+47	XXXXXX.XX	XXXXXX.XX	630.18	623.37	6.81	5.92
D-5	00+60	XXXXXX.XX	XXXXXX.XX	630.64	622.03	8.61	7.79
D-6	00+75	XXXXXX.XX	XXXXXX.XX	631.39	619.95	11.44	10.29
D-7	00+90	XXXXXX.XX	XXXXXX.XX	631.86	616.75	15.11	12.65
D-8	01+08	XXXXXX.XX	XXXXXX.XX	632.02	613.00	19.02	15.83
D-9	01+24	XXXXXX.XX	XXXXXX.XX	632.18	610.31	21.87	18.16
D-10	01+68	XXXXXX.XX	XXXXXX.XX	614.56	608.76	5.80	4.06
D-11	01+76	XXXXXX.XX	XXXXXX.XX	614.95	608.51	6.44	5.23
D-12	01+82	XXXXXX.XX	XXXXXX.XX	615.03	608.41	6.62	5.67
D-13	01+93	XXXXXX.XX	XXXXXX.XX	615.12	607.90	7.22	6.33
D-14	02+03	XXXXXX.XX	XXXXXX.XX	615.23	607.68	7.55	6.30
D-15	02+18	XXXXXX.XX	XXXXXX.XX	615.40	608.05	7.35	6.70
D-16	02+23	XXXXXX.XX	XXXXXX.XX	615.83	607.87	7.96	6.45
D-17	02+38	XXXXXX.XX	XXXXXX.XX	615.92	608.55	7.37	5.43
D-18	02+55	XXXXXX.XX	XXXXXX.XX	616.15	608.25	7.90	6.36
D-19	02+64	XXXXXX.XX	XXXXXX.XX	616.23	608.13	8.10	6.89
D-20	02+71	XXXXXX.XX	XXXXXX.XX	616.32	607.03	9.29	7.95
D-21	02+85	XXXXXX.XX	XXXXXX.XX	616.36	606.02	10.34	9.26
D-22	03+13	XXXXXX.XX	XXXXXX.XX	619.75	606.91	12.84	10.64
D-23	03+18	XXXXXX.XX	XXXXXX.XX	621.99	608.40	13.59	10.77
D-24	03+24	XXXXXX.XX	XXXXXX.XX	623.92	609.12	14.80	12.01
D-25	03+36	XXXXXX.XX	XXXXXX.XX	629.08	611.29	17.79	13.66
D-26	03+50	XXXXXX.XX	XXXXXX.XX	628.34	612.32	16.02	12.74
D-27	03+70	XXXXXX.XX	XXXXXX.XX	628.36	617.23	11.13	6.70
D-28	03+87	XXXXXX.XX	XXXXXX.XX	629.07	621.03	8.05	6.90
L-Sign		XXXXXX.XX	XXXXXX.XX	632.40			
R-Sign		XXXXXX.XX	XXXXXX.XX	628.75			

PROFILE VIEW



LEGEND	DEFINITIONS	GEODETIC SETTINGS	PLOT NOTES	CONTROL POINT VERIFICATION
<ul style="list-style-type: none"> Water Level Topo / Bathymetry Projected Topo / Bathymetry MSDoC* Elevation T.O.P. Point (Plan/Profile) T.O.P. Best Fit Line (Plan/Profile) Pipeline Crossing Marker 	<p>DoC – Depth of Cover</p> <p>T.O.P. – Top of Pipe or Line</p> <p>MSDoC* – Minimum Statistical Depth of Cover. This is based on confidence levels that are associated with each pipeline data point and represents a 95% likelihood that the true depth of cover is deeper than this depth.</p>	<p>NAD83 (2011) U.S. State Plane North Carolina Zone, 3200 Geoid 2012A Units = USft</p> <p>Real-time correction service provided by NC-DOT.</p>	<p>Plan View: A single-beam echo-sounder was used to determine seabed elevation where pipeline data was collected.</p> <p>Profile View: All elevations and water levels are referenced from Mean Sea Level (MSL).</p>	<p>A CONTROL POINT PROVIDED BY <COMPANY> WAS REFERENCED BY DOC MAPPING TO ADJUST FOR HORIZONTAL AND VERTICAL VARIANCE DURING THE TIME OF THIS SURVEY. INFORMATION FOR THIS CONTROL POINT IS AS FOLLOWS:</p> <p>ID: N = E = EL:</p> <p>(ALL OTHER DATA REPRESENTED ON THIS PLOT SHEET HAS BEEN COLLECTED AND PORTRAYED BY DOC MAPPING)</p> <p>PLEASE REFER TO "APPENDIX A - CONTROL POINT VERIFICATION SHEET" FOR MORE DETAILS ON THIS CONTROL POINT AND DOC MAPPING'S OCCUPATIONS.</p>

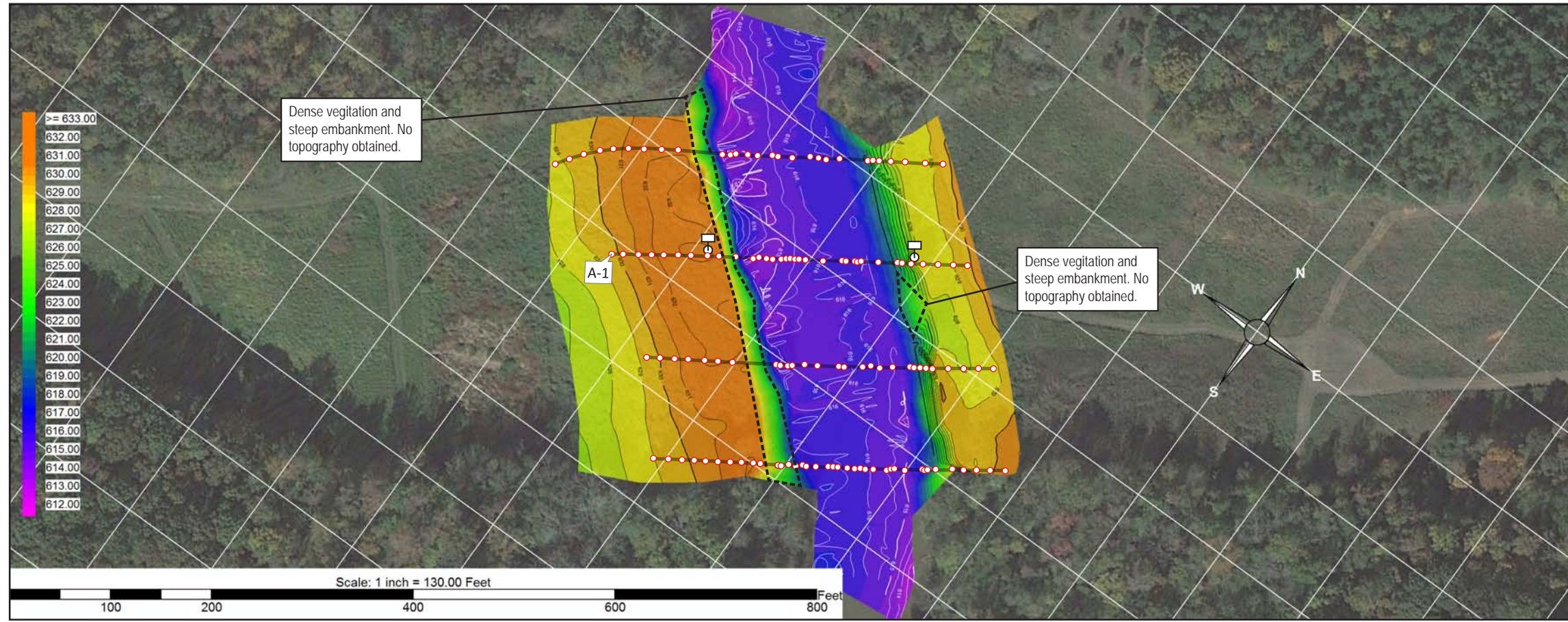
PIPELINE (42IN)
DEPTH OF COVER STUDY
DATE: 3/2/2015 - 3/3/2015

RIVER CROSSING
<COUNTY>
<CITY, STATE>

PLAN / PROFILE

PREPARED FOR:

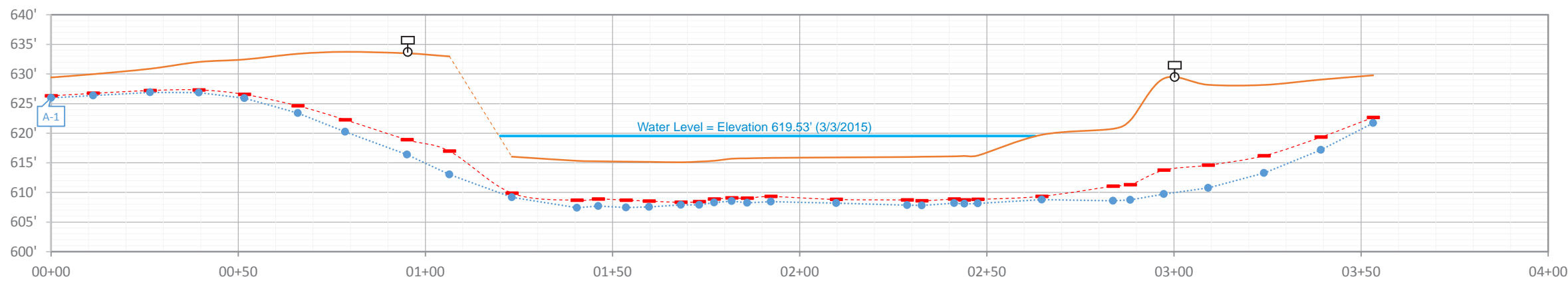
PLAN VIEW



DoC DATA

Pt. ID	STA#	East (ft)	North (ft)	Topo Elev. (ft)	T.O.P. Elev. (ft)	DoC (ft)	MS DoC* (ft)
A-1	00+00	XXXXXX.XX	XXXXXX.XX	629.42	625.98	3.44	3.11
A-2	00+11	XXXXXX.XX	XXXXXX.XX	629.97	626.37	3.60	3.24
A-3	00+26	XXXXXX.XX	XXXXXX.XX	630.88	626.88	4.00	3.67
A-4	00+40	XXXXXX.XX	XXXXXX.XX	632.03	626.85	5.18	4.72
A-5	00+52	XXXXXX.XX	XXXXXX.XX	632.45	625.89	6.56	5.90
A-6	00+66	XXXXXX.XX	XXXXXX.XX	633.41	623.40	10.00	8.79
A-7	00+79	XXXXXX.XX	XXXXXX.XX	633.73	620.25	13.48	11.48
A-8	00+95	XXXXXX.XX	XXXXXX.XX	633.49	616.37	17.12	14.59
A-9	01+06	XXXXXX.XX	XXXXXX.XX	632.96	613.02	19.94	16.00
A-10	01+23	XXXXXX.XX	XXXXXX.XX	616.04	609.19	6.85	6.16
A-11	01+41	XXXXXX.XX	XXXXXX.XX	615.34	607.42	7.92	6.68
A-12	01+46	XXXXXX.XX	XXXXXX.XX	615.26	607.71	7.55	6.37
A-13	01+54	XXXXXX.XX	XXXXXX.XX	615.20	607.45	7.75	6.50
A-14	01+60	XXXXXX.XX	XXXXXX.XX	615.16	607.55	7.61	6.63
A-15	01+68	XXXXXX.XX	XXXXXX.XX	615.09	607.90	7.19	6.77
A-16	01+73	XXXXXX.XX	XXXXXX.XX	615.21	607.91	7.30	6.77
A-17	01+77	XXXXXX.XX	XXXXXX.XX	615.35	608.28	7.07	6.48
A-18	01+82	XXXXXX.XX	XXXXXX.XX	615.69	608.53	7.16	6.64
A-19	01+86	XXXXXX.XX	XXXXXX.XX	615.75	608.24	7.51	6.73
A-20	01+92	XXXXXX.XX	XXXXXX.XX	615.83	608.42	7.41	6.52
A-21	02+10	XXXXXX.XX	XXXXXX.XX	615.91	608.19	7.72	7.10
A-22	02+29	XXXXXX.XX	XXXXXX.XX	615.98	607.83	8.15	7.26
A-23	02+33	XXXXXX.XX	XXXXXX.XX	616.03	607.80	8.23	7.44
A-24	02+41	XXXXXX.XX	XXXXXX.XX	616.09	608.18	7.91	7.22
A-25	02+44	XXXXXX.XX	XXXXXX.XX	616.16	608.07	8.09	7.44
A-26	02+48	XXXXXX.XX	XXXXXX.XX	616.23	608.16	8.07	7.42
A-27	02+65	XXXXXX.XX	XXXXXX.XX	619.73	608.79	10.94	10.38
A-28	02+84	XXXXXX.XX	XXXXXX.XX	620.74	608.59	12.15	9.69
A-29	02+88	XXXXXX.XX	XXXXXX.XX	622.15	608.75	13.40	10.87
A-30	02+97	XXXXXX.XX	XXXXXX.XX	629.23	609.73	19.50	15.47
A-31	03+09	XXXXXX.XX	XXXXXX.XX	628.17	610.77	17.40	13.56
A-32	03+24	XXXXXX.XX	XXXXXX.XX	628.15	613.27	14.88	11.96
A-33	03+39	XXXXXX.XX	XXXXXX.XX	629.05	617.19	11.86	9.73
A-34	03+53	XXXXXX.XX	XXXXXX.XX	629.77	621.72	8.05	7.10
L-Sign		XXXXXX.XX	XXXXXX.XX	633.59			
R-Sign		XXXXXX.XX	XXXXXX.XX	629.04			

PROFILE VIEW



LEGEND	DEFINITIONS	GEODETIC SETTINGS	PLOT NOTES	CONTROL POINT VERIFICATION
<ul style="list-style-type: none"> Water Level Topo / Bathymetry Projected Topo / Bathymetry MSDoC* Elevation T.O.P. Point (Plan/Profile) T.O.P. Best Fit Line (Plan/Profile) Pipeline Crossing Marker 	<p>DoC – Depth of Cover</p> <p>T.O.P. – Top of Pipe or Line</p> <p>MSDoC* – Minimum Statistical Depth of Cover. This is based on confidence levels that are associated with each pipeline data point and represents a 95% likelihood that the true depth of cover is deeper than this depth.</p>	<p>NAD83 (2011) U.S. State Plane North Carolina Zone, 3200 Geoid 2012A Units = USft</p> <p>Real-time correction service provided by NC-DOT.</p>	<p>Plan View: A single-beam echo-sounder was used to determine seabed elevation where pipeline data was collected.</p> <p>Profile View: All elevations and water levels are referenced from Mean Sea Level (MSL).</p>	<p>A CONTROL POINT PROVIDED BY <COMPANY> WAS REFERENCED BY DOC MAPPING TO ADJUST FOR HORIZONTAL AND VERTICAL VARIANCE DURING THE TIME OF THIS SURVEY. INFORMATION FOR THIS CONTROL POINT IS AS FOLLOWS:</p> <p>ID: N = E = EL:</p> <p>(ALL OTHER DATA REPRESENTED ON THIS PLOT SHEET HAS BEEN COLLECTED AND PORTRAYED BY DOC MAPPING)</p> <p>PLEASE REFER TO "APPENDIX A - CONTROL POINT VERIFICATION SHEET" FOR MORE DETAILS ON THIS CONTROL POINT AND DOC MAPPING'S OCCUPATIONS.</p>

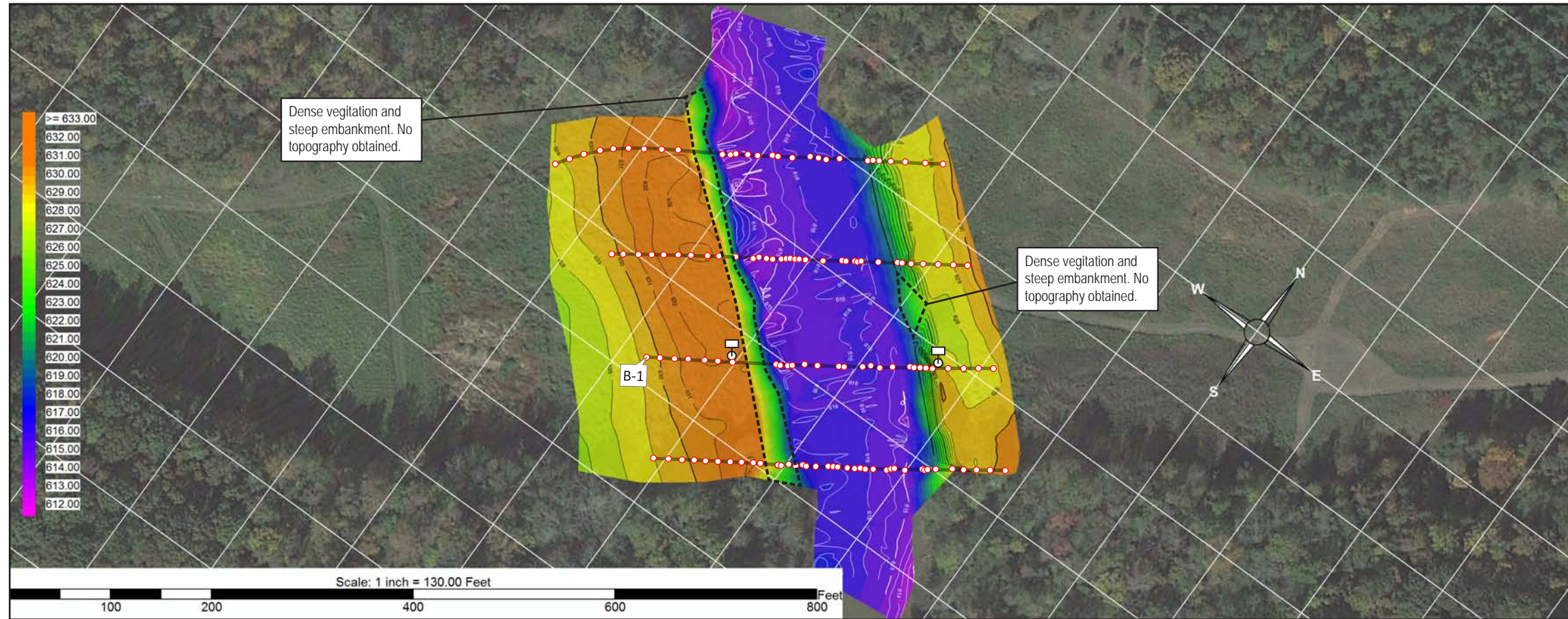
PIPELINE (30IN)
DEPTH OF COVER STUDY
DATE: 3/2/2015 - 3/3/2015

RIVER CROSSING
<COUNTY>
<CITY, STATE>

PLAN / PROFILE

PREPARED FOR:

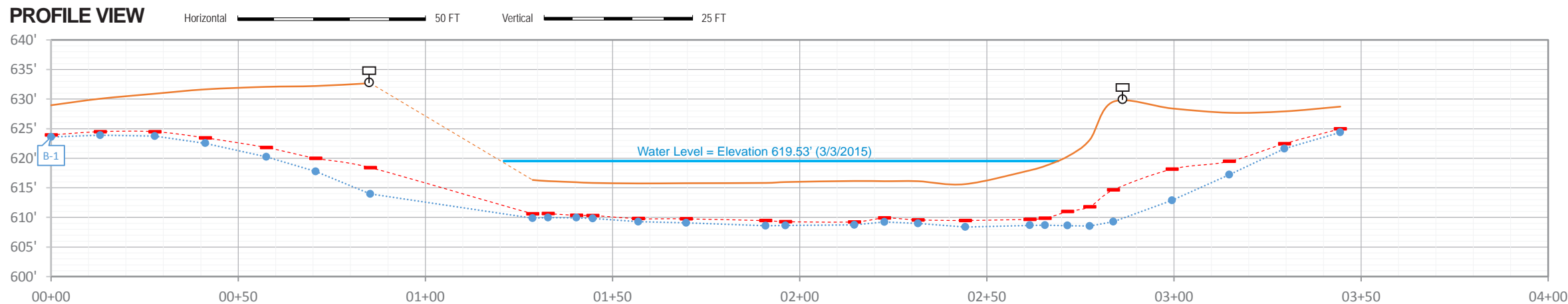
PLAN VIEW



DoC DATA

Pt. ID	STA#	East (ft)	North (ft)	Topo Elev. (ft)	T.O.P. Elev. (ft)	DoC (ft)	MS DoC* (ft)
B-1	00+00	XXXXXX.XX	XXXXXX.XX	628.97	623.59	5.37	5.01
B-2	00+13	XXXXXX.XX	XXXXXX.XX	630.07	623.90	6.16	5.57
B-3	00+28	XXXXXX.XX	XXXXXX.XX	630.91	623.73	7.18	6.42
B-4	00+41	XXXXXX.XX	XXXXXX.XX	631.64	622.53	9.11	8.20
B-5	00+58	XXXXXX.XX	XXXXXX.XX	632.07	620.23	11.84	10.26
B-6	00+71	XXXXXX.XX	XXXXXX.XX	632.21	617.75	14.46	12.23
B-7	00+85	XXXXXX.XX	XXXXXX.XX	632.68	613.95	18.73	14.27
B-8	01+29	XXXXXX.XX	XXXXXX.XX	616.33	609.87	6.46	5.70
B-9	01+33	XXXXXX.XX	XXXXXX.XX	616.14	609.98	6.16	5.51
B-10	01+40	XXXXXX.XX	XXXXXX.XX	615.95	609.94	6.01	5.61
B-11	01+45	XXXXXX.XX	XXXXXX.XX	615.83	609.83	6.00	5.51
B-12	01+57	XXXXXX.XX	XXXXXX.XX	615.74	609.27	6.47	5.94
B-13	01+70	XXXXXX.XX	XXXXXX.XX	615.78	609.07	6.71	6.02
B-14	01+91	XXXXXX.XX	XXXXXX.XX	615.83	608.60	7.23	6.38
B-15	01+96	XXXXXX.XX	XXXXXX.XX	615.98	608.65	7.33	6.71
B-16	02+15	XXXXXX.XX	XXXXXX.XX	616.16	608.75	7.41	6.92
B-17	02+23	XXXXXX.XX	XXXXXX.XX	616.12	609.24	6.88	6.23
B-18	02+32	XXXXXX.XX	XXXXXX.XX	616.12	608.99	7.13	6.54
B-19	02+44	XXXXXX.XX	XXXXXX.XX	615.63	608.37	7.26	6.14
B-20	02+62	XXXXXX.XX	XXXXXX.XX	617.96	608.66	9.30	8.28
B-21	02+66	XXXXXX.XX	XXXXXX.XX	618.70	608.70	10.00	8.85
B-22	02+72	XXXXXX.XX	XXXXXX.XX	620.31	608.61	11.69	9.33
B-23	02+78	XXXXXX.XX	XXXXXX.XX	623.10	608.52	14.58	11.30
B-24	02+84	XXXXXX.XX	XXXXXX.XX	629.57	609.28	20.29	14.91
B-25	03+00	XXXXXX.XX	XXXXXX.XX	628.42	612.88	15.53	10.25
B-26	03+15	XXXXXX.XX	XXXXXX.XX	627.69	617.21	10.48	8.22
B-27	03+30	XXXXXX.XX	XXXXXX.XX	627.92	621.61	6.31	5.46
B-28	03+44	XXXXXX.XX	XXXXXX.XX	628.73	624.38	4.35	3.75
L-Sign		XXXXXX.XX	XXXXXX.XX	632.86			
R-Sign		XXXXXX.XX	XXXXXX.XX	629.45			

PROFILE VIEW



LEGEND	DEFINITIONS	GEODETIC SETTINGS	PLOT NOTES	CONTROL POINT VERIFICATION
<ul style="list-style-type: none"> Water Level Topo / Bathymetry Projected Topo / Bathymetry MSDoC* Elevation T.O.P. Point (Plan/Profile) T.O.P. Best Fit Line (Plan/Profile) Pipeline Crossing Marker 	<p>DoC – Depth of Cover</p> <p>T.O.P. – Top of Pipe or Line</p> <p>MSDoC* – Minimum Statistical Depth of Cover. This is based on confidence levels that are associated with each pipeline data point and represents a 95% likelihood that the true depth of cover is deeper than this depth.</p>	<p>NAD83 (2011) U.S. State Plane North Carolina Zone, 3200 Geoid 2012A Units = USft</p> <p>Real-time correction service provided by NC-DOT.</p>	<p>Plan View: A single-beam echo-sounder was used to determine seabed elevation where pipeline data was collected.</p> <p>Profile View: All elevations and water levels are referenced from Mean Sea Level (MSL).</p>	<p>A CONTROL POINT PROVIDED BY <COMPANY> WAS REFERENCED BY DOC MAPPING TO ADJUST FOR HORIZONTAL AND VERTICAL VARIANCE DURING THE TIME OF THIS SURVEY. INFORMATION FOR THIS CONTROL POINT IS AS FOLLOWS:</p> <p>ID: N = E = EL:</p> <p>(ALL OTHER DATA REPRESENTED ON THIS PLOT SHEET HAS BEEN COLLECTED AND PORTRAYED BY DOC MAPPING)</p> <p>PLEASE REFER TO "APPENDIX A - CONTROL POINT VERIFICATION SHEET" FOR MORE DETAILS ON THIS CONTROL POINT AND DOC MAPPING'S OCCUPATIONS.</p>

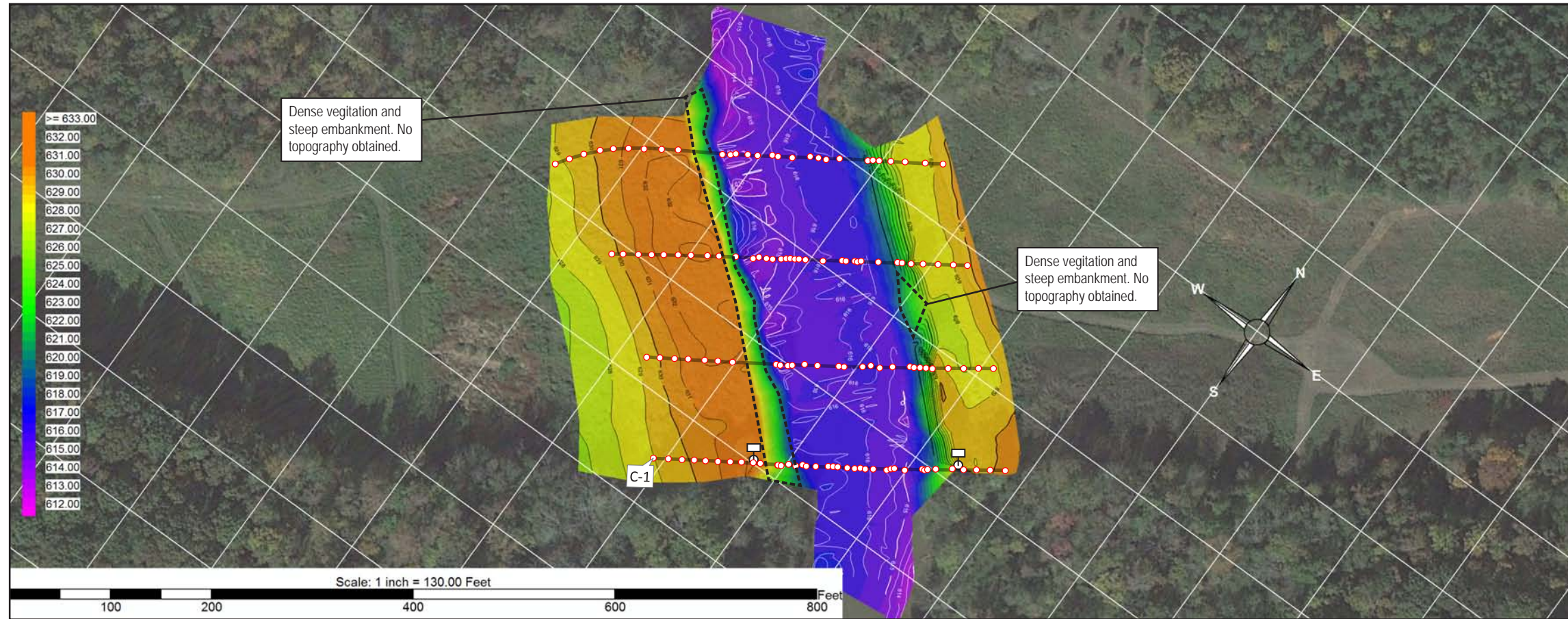
PIPELINE (30IN)
DEPTH OF COVER STUDY
DATE: 3/2/2015 - 3/3/2015

RIVER CROSSING
<COUNTY>
<CITY, STATE>

PLAN / PROFILE

PREPARED FOR:

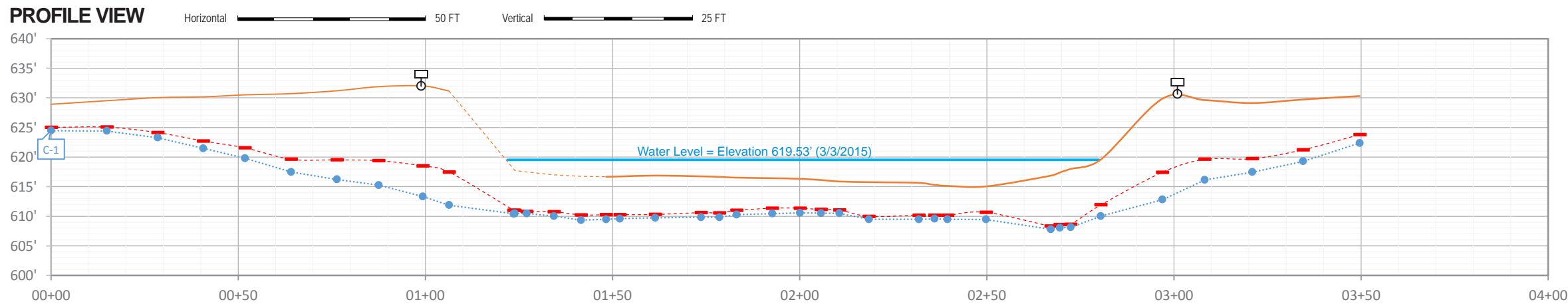
PLAN VIEW



DoC DATA

Pt. ID	STA#	East (ft)	North (ft)	Topo Elev. (ft)	T.O.P. Elev. (ft)	DoC (ft)	MS DoC* (ft)
C-1	00+00	XXXXXX.XX	XXXXXX.XX	628.92	624.46	4.47	3.91
C-2	00+15	XXXXXX.XX	XXXXXX.XX	629.53	624.40	5.12	4.47
C-3	00+28	XXXXXX.XX	XXXXXX.XX	630.04	623.28	6.77	5.91
C-4	00+41	XXXXXX.XX	XXXXXX.XX	630.17	621.47	8.70	7.45
C-5	00+52	XXXXXX.XX	XXXXXX.XX	630.51	619.78	10.74	8.96
C-6	00+64	XXXXXX.XX	XXXXXX.XX	630.72	617.46	13.26	11.10
C-7	00+76	XXXXXX.XX	XXXXXX.XX	631.21	616.21	15.00	11.69
C-8	00+88	XXXXXX.XX	XXXXXX.XX	631.90	615.26	16.64	12.51
C-9	00+99	XXXXXX.XX	XXXXXX.XX	632.02	613.31	18.71	13.52
C-10	01+06	XXXXXX.XX	XXXXXX.XX	631.17	611.87	19.30	13.69
C-11	01+24	XXXXXX.XX	XXXXXX.XX	618.00	610.43	7.57	6.98
C-12	01+24	XXXXXX.XX	XXXXXX.XX	617.75	610.44	7.31	6.75
C-13	01+27	XXXXXX.XX	XXXXXX.XX	617.50	610.45	7.05	6.69
C-14	01+34	XXXXXX.XX	XXXXXX.XX	617.00	610.01	6.99	6.24
C-15	01+42	XXXXXX.XX	XXXXXX.XX	616.75	609.33	7.42	6.53
C-16	01+48	XXXXXX.XX	XXXXXX.XX	616.67	609.47	7.20	6.41
C-17	01+52	XXXXXX.XX	XXXXXX.XX	616.72	609.58	7.14	6.45
C-18	01+61	XXXXXX.XX	XXXXXX.XX	616.87	609.74	7.13	6.57
C-19	01+74	XXXXXX.XX	XXXXXX.XX	616.74	609.82	6.92	6.13
C-20	01+79	XXXXXX.XX	XXXXXX.XX	616.65	609.82	6.83	6.11
C-21	01+83	XXXXXX.XX	XXXXXX.XX	616.52	610.25	6.27	5.54
C-22	01+93	XXXXXX.XX	XXXXXX.XX	616.43	610.45	5.98	5.07
C-23	02+00	XXXXXX.XX	XXXXXX.XX	616.32	610.57	5.75	4.96
C-24	02+06	XXXXXX.XX	XXXXXX.XX	616.12	610.52	5.60	4.98
C-25	02+11	XXXXXX.XX	XXXXXX.XX	615.87	610.49	5.38	4.82
C-26	02+19	XXXXXX.XX	XXXXXX.XX	615.76	609.49	6.27	5.78
C-27	02+32	XXXXXX.XX	XXXXXX.XX	615.64	609.48	6.16	5.47
C-28	02+36	XXXXXX.XX	XXXXXX.XX	615.29	609.55	5.74	5.12
C-29	02+39	XXXXXX.XX	XXXXXX.XX	615.13	609.48	5.65	4.97
C-30	02+50	XXXXXX.XX	XXXXXX.XX	615.04	609.44	5.60	4.38
C-31	02+67	XXXXXX.XX	XXXXXX.XX	616.86	607.79	9.07	8.55
C-32	02+70	XXXXXX.XX	XXXXXX.XX	617.40	608.03	9.37	8.81
C-33	02+72	XXXXXX.XX	XXXXXX.XX	618.00	608.13	9.87	9.35
C-34	02+81	XXXXXX.XX	XXXXXX.XX	619.59	610.02	9.57	7.67
C-35	02+97	XXXXXX.XX	XXXXXX.XX	629.87	612.81	17.06	12.43
C-36	03+08	XXXXXX.XX	XXXXXX.XX	629.62	616.15	13.48	10.00
C-37	03+21	XXXXXX.XX	XXXXXX.XX	629.13	617.45	11.67	9.41
C-38	03+35	XXXXXX.XX	XXXXXX.XX	629.73	619.27	10.46	8.49
C-39	03+50	XXXXXX.XX	XXXXXX.XX	630.31	622.35	7.97	6.52
L-Sign		XXXXXX.XX	XXXXXX.XX	632.21			
R-Sign		XXXXXX.XX	XXXXXX.XX	629.86			

PROFILE VIEW



LEGEND	DEFINITIONS	GEODETIC SETTINGS	PLOT NOTES	CONTROL POINT VERIFICATION
<ul style="list-style-type: none"> Water Level Topo / Bathymetry Projected Topo / Bathymetry MSDoC* Elevation T.O.P. Point (Plan/Profile) T.O.P. Best Fit Line (Plan/Profile) Pipeline Crossing Marker 	<p>DoC – Depth of Cover</p> <p>T.O.P. – Top of Pipe or Line</p> <p>MSDoC* – Minimum Statistical Depth of Cover. This is based on confidence levels that are associated with each pipeline data point and represents a 95% likelihood that the true depth of cover is deeper than this depth.</p>	<p>NAD83 (2011) U.S. State Plane North Carolina Zone, 3200 Geoid 2012A Units = USft</p> <p>Real-time correction service provided by NC-DOT.</p>	<p>Plan View: A single-beam echo-sounder was used to determine seabed elevation where pipeline data was collected.</p> <p>Profile View: All elevations and water levels are referenced from Mean Sea Level (MSL).</p>	<p>A CONTROL POINT PROVIDED BY <COMPANY> WAS REFERENCED BY DOC MAPPING TO ADJUST FOR HORIZONTAL AND VERTICAL VARIANCE DURING THE TIME OF THIS SURVEY. INFORMATION FOR THIS CONTROL POINT IS AS FOLLOWS:</p> <p>ID: N = E = EL:</p> <p>(ALL OTHER DATA REPRESENTED ON THIS PLOT SHEET HAS BEEN COLLECTED AND PORTRAYED BY DOC MAPPING)</p> <p>PLEASE REFER TO "APPENDIX A - CONTROL POINT VERIFICATION SHEET" FOR MORE DETAILS ON THIS CONTROL POINT AND DOC MAPPING'S OCCUPATIONS.</p>

PIPELINE (36IN)
DEPTH OF COVER STUDY
DATE: 3/2/2015 - 3/3/2015

RIVER CROSSING
<COUNTY>
<CITY, STATE>

PLAN / PROFILE

PREPARED FOR: