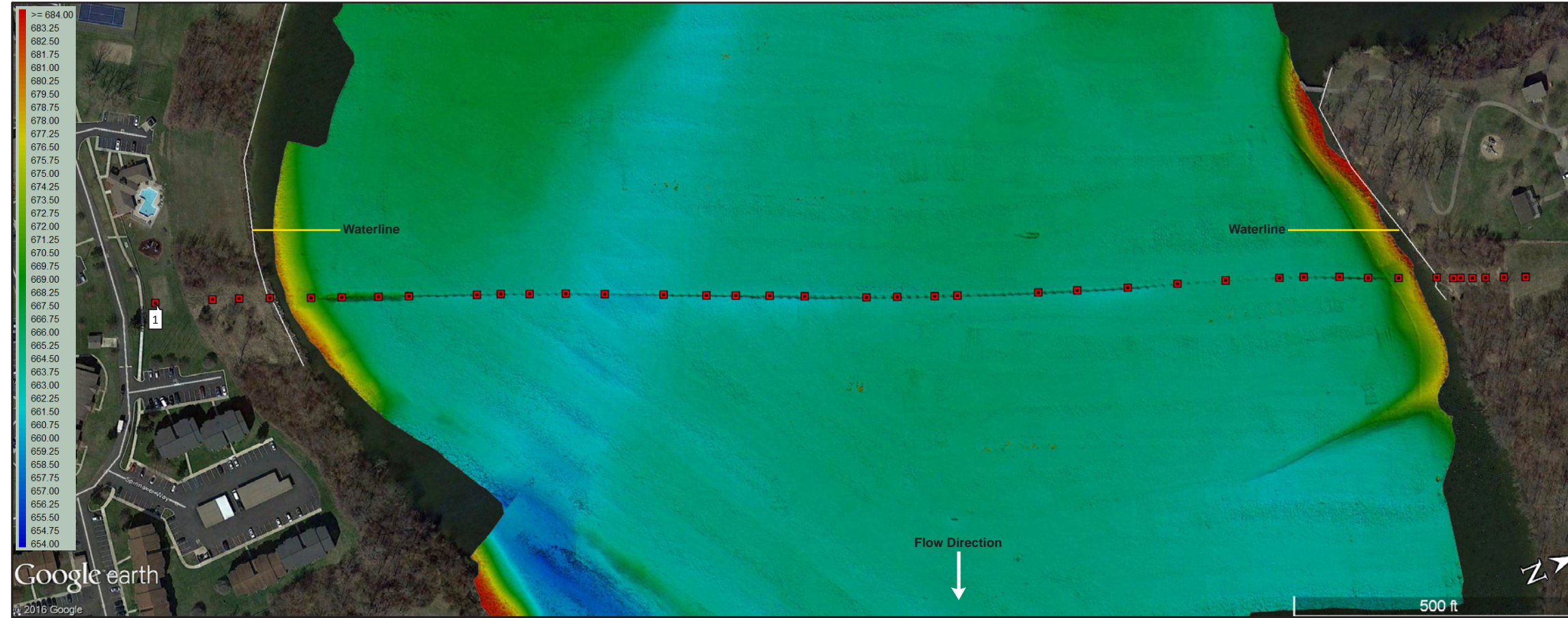
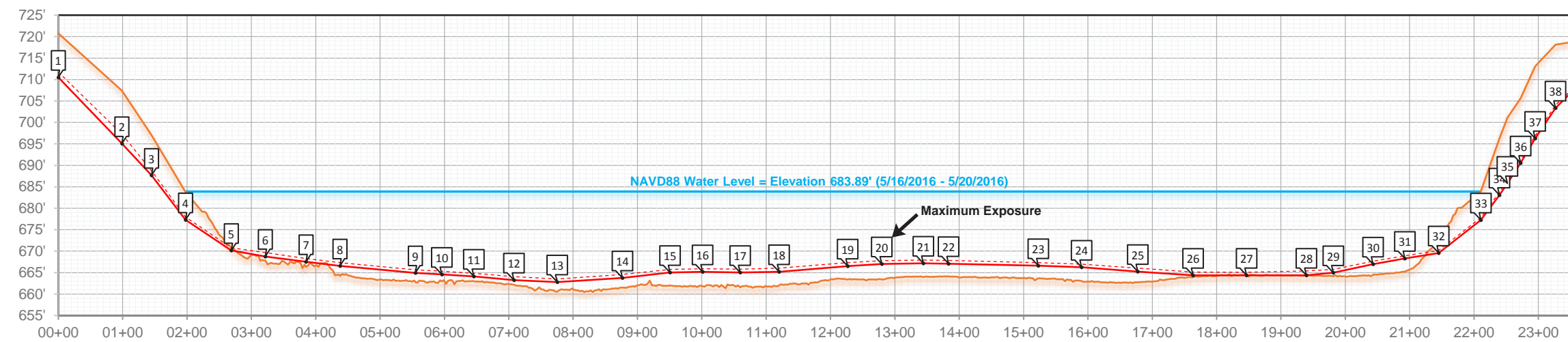


**PLAN VIEW**



**PROFILE VIEW**



**DoC DATA**

Pt. ID	STA#	WGS84 Latitude	WGS84 Longitude	Topo Elev. (ft)	T.O.P. Elev. (ft)	DoC (ft)	MS DoC* (ft)
1	00+00			720.77	710.51	10.27	9.02
2	00+99			707.42	695.05	12.37	10.13
3	01+45			697.04	687.66	9.38	8.30
4	01+98			683.75	677.29	6.46	5.77
5	02+69			670.73	670.15	0.58	-0.05
6	03+22			667.81	668.77	-0.96	-1.84
7	03+85			666.30	667.54	-1.24	-2.00
8	04+38			664.20	666.54	-2.34	-3.09
9	05+55			662.73	664.93	-2.20	-2.91
10	05+96			662.93	664.58	-1.65	-2.39
11	06+46			662.99	664.13	-1.14	-1.86
12	07+08			662.20	663.25	-1.05	-1.84
13	07+75			660.53	662.81	-2.28	-2.97
14	08+77			661.51	663.75	-2.24	-3.04
15	09+51			662.01	665.01	-3.00	-3.75
16	10+01			661.84	665.16	-3.32	-4.06
17	10+60			661.55	665.01	-3.46	-4.23
18	11+20			662.01	665.20	-3.19	-4.05
19	12+27			663.42	666.52	-3.10	-3.92
20	12+80			663.42	667.02	-3.60	-4.35
21	13+44			663.98	667.17	-3.19	-3.93
22	13+83			664.11	667.08	-2.97	-3.74
23	15+23			663.65	666.60	-2.95	-3.67
24	15+90			663.06	666.24	-3.18	-3.88
25	16+78			662.76	665.25	-2.49	-3.30
26	17+63			663.94	664.35	-0.41	-1.20
27	18+47			664.47	664.36	0.11	-0.62
28	19+40			664.40	664.37	0.03	-1.00
29	19+81			664.17	664.96	-0.79	-1.59
30	20+43			664.50	666.98	-2.48	-3.15
31	20+93			665.25	668.30	-3.05	-3.63
32	21+45			672.67	669.57	3.10	2.50
33	22+11			683.91	677.25	6.66	6.10
34	22+40			696.23	683.07	13.15	12.46
35	22+52			701.15	685.80	15.35	14.89
36	22+72			705.60	690.54	15.06	14.37
37	22+95			713.08	696.28	16.80	16.17
38	23+27			718.14	703.35	14.79	14.07
39	23+64			719.01	708.97	10.04	9.68

Land Data  
Underwater Data  
*Italics = Projected topo or bathymetric points and DoC / MSDoC*

LEGEND	DEFINITIONS	GEODETIC SETTINGS	PLOT NOTES	CONTROL POINT VERIFICATION
<ul style="list-style-type: none"> <li>Water Level</li> <li>Topo / Bathymetry</li> <li>Projected Topo / Bathymetry</li> <li>+VSDV</li> <li>T.O.P. Point</li> <li>No Data (obstruction, loss of signal)</li> <li>Transmitter Hookup Site (if nearby)</li> </ul>	<p><b>DoC</b> - Depth of Cover</p> <p><b>T.O.P.</b> - Top of Pipe (or Cable, Conduit, etc.)</p> <p><b>+VSDV</b> - Positive aspect of vertical confidence level. Represents a 95% likelihood that the true position of the target lies deeper than this point.</p> <p><b>MSDoC*</b> - Minimum Statistical Depth of Cover. This reflects the measured distance from the +VSDV component to the Topo / Bathymetry line.</p>			<p>A CONTROL POINT WAS ESTABLISHED AND REFERENCED BY DoC MAPPING TO ADJUST FOR HORIZONTAL AND VERTICAL VARIANCE DURING THE TIME OF THIS SURVEY. INFORMATION FOR THE CONTROL POINT(S) BELOW:</p> <p>ID - OP-FORD E - 13334901.9 N - 261035.442 EL - 690.494</p> <p>PLEASE REFER TO "APPENDIX A - CONTROL POINT VERIFICATION SHEET" FOR MORE DETAILS ON THE CONTROL POINT(S) AND DoC MAPPING'S OBSERVATIONS.</p>



**DEPTH OF COVER STUDY**  
DATE(S): 5/16/2016 - 5/20/2016

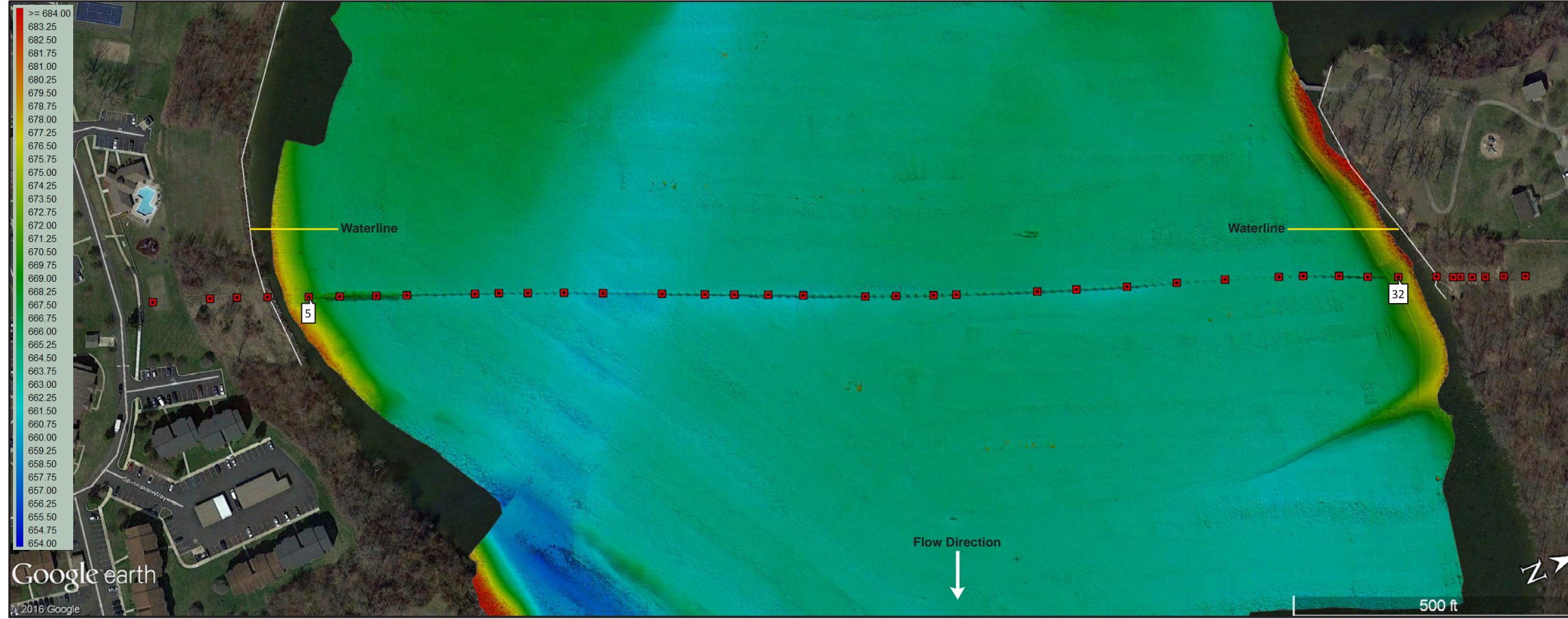
---

**PLAN / PROFILE**

PREPARED FOR:



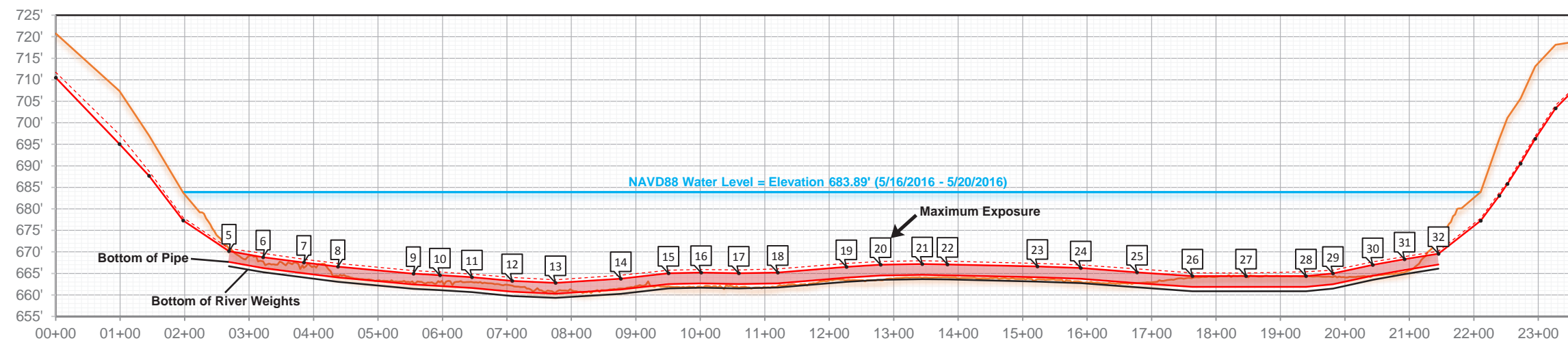
**PLAN VIEW**



**DoC DATA**


Pt. ID	STA#	WGS84 Latitude	WGS84 Longitude	Topo Elev. (ft)	T.O.P. Elev. (ft)	B.O.P. Elev. (ft)	Span V-Dist. (ft)
							Negative means no spanning
5	02+69			670.73	670.15	667.65	-3.08
6	03+22			667.81	668.77	666.27	-1.54
7	03+85			666.30	667.54	665.04	-1.26
8	04+38			664.20	666.54	664.04	-0.16
9	05+55			662.73	664.93	662.43	-0.30
10	05+96			662.93	664.58	662.08	-0.85
11	06+46			662.99	664.13	661.63	-1.36
12	07+08			662.20	663.25	660.75	-1.45
13	07+75			660.53	662.81	660.31	-0.22
14	08+77			661.51	663.75	661.25	-0.26
15	09+51			662.01	665.01	662.51	0.50
16	10+01			661.84	665.16	662.66	0.82
17	10+60			661.55	665.01	662.51	0.96
18	11+20			662.01	665.20	662.70	0.69
19	12+27			663.42	666.52	664.02	0.60
20	12+80			663.42	667.02	664.52	1.10
21	13+44			663.98	667.17	664.67	0.69
22	13+83			664.11	667.08	664.58	0.47
23	15+23			663.65	666.60	664.10	0.45
24	15+90			663.06	666.24	663.74	0.68
25	16+78			662.76	665.25	662.75	-0.01
26	17+63			663.94	664.35	661.85	-2.09
27	18+47			664.47	664.36	661.86	-2.61
28	19+40			664.40	664.37	661.87	-2.53
29	19+81			664.17	664.96	662.46	-1.71
30	20+43			664.50	666.98	664.48	-0.02
31	20+93			665.25	668.30	665.80	0.55
32	21+45			672.67	669.57	667.07	-5.60

**PROFILE VIEW**



Land Data  
Underwater Data  
*Italics = Projected topo or bathymetric points and DoC / MSDoC*

LEGEND	DEFINITIONS	GEODETIC SETTINGS	PLOT NOTES	CONTROL POINT VERIFICATION
<ul style="list-style-type: none"> <li>Water Level</li> <li>Topo / Bathymetry</li> <li>Projected Topo / Bathymetry</li> <li>+VSDV</li> <li>T.O.P. Point</li> <li>No Data (obstruction, loss of signal)</li> <li>Transmitter Hookup Site (if nearby)</li> </ul>	<p><b>DoC</b> - Depth of Cover</p> <p><b>T.O.P.</b> - Top of Pipe (or Cable, Conduit, etc.)</p> <p><b>+VSDV</b> - Positive aspect of vertical confidence level. Represents a 95% likelihood that the true position of the target lies deeper than this point.</p> <p><b>MSDoC*</b> - Minimum Statistical Depth of Cover. This reflects the measured distance from the +VSDV component to the Topo / Bathymetry line.</p>			<p>A CONTROL POINT WAS ESTABLISHED AND REFERENCED BY DoC MAPPING TO ADJUST FOR HORIZONTAL AND VERTICAL VARIANCE DURING THE TIME OF THIS SURVEY. INFORMATION FOR THE CONTROL POINT(S) BELOW:</p> <p>ID - OP-FORD E - 13334901.9 N - 261035.442 EL - 690.494</p> <p>PLEASE REFER TO "APPENDIX A - CONTROL POINT VERIFICATION SHEET" FOR MORE DETAILS ON THE CONTROL POINT(S) AND DoC MAPPING'S OBSERVATIONS.</p>



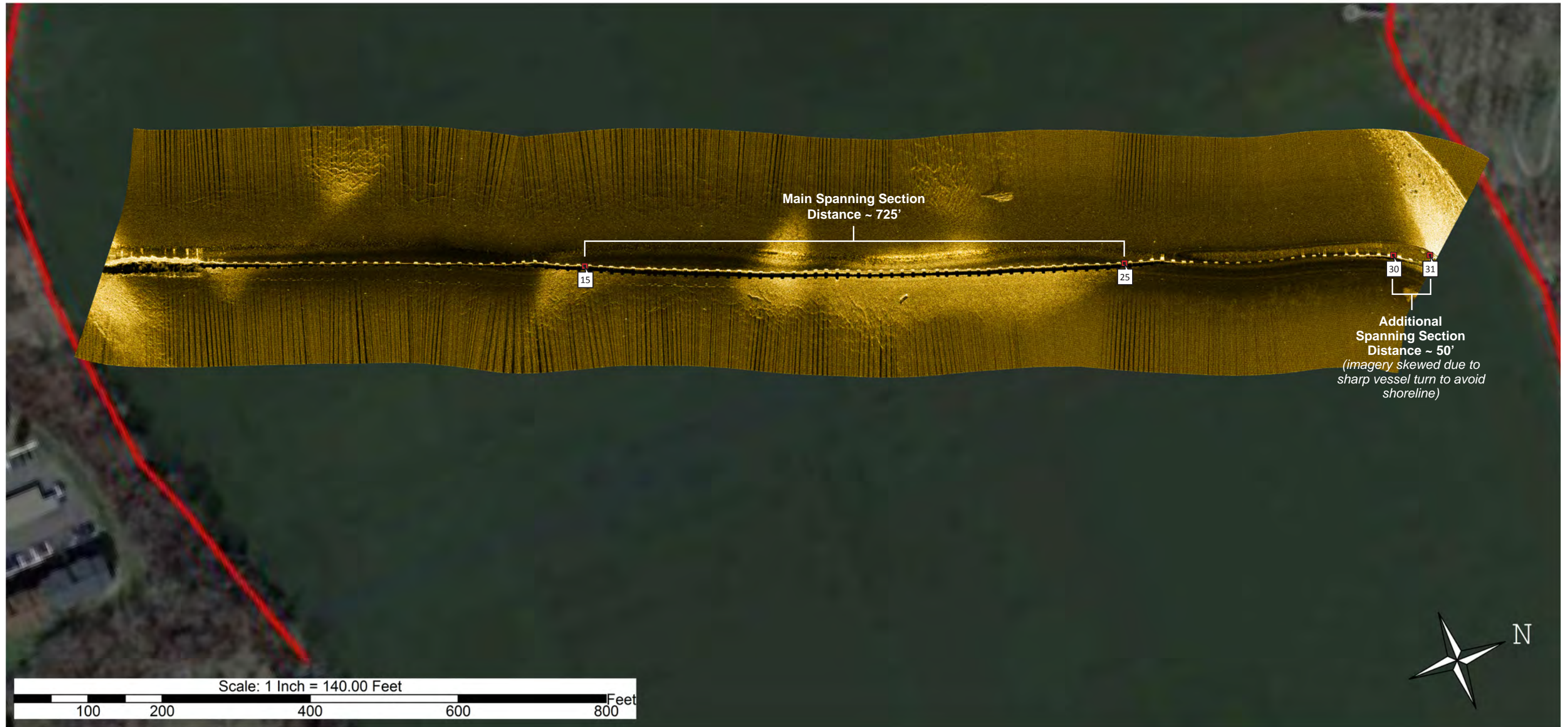
**DEPTH OF COVER STUDY**  
DATE(S): 5/16/2016 - 5/20/2016


---

PLAN / PROFILE (Detail)

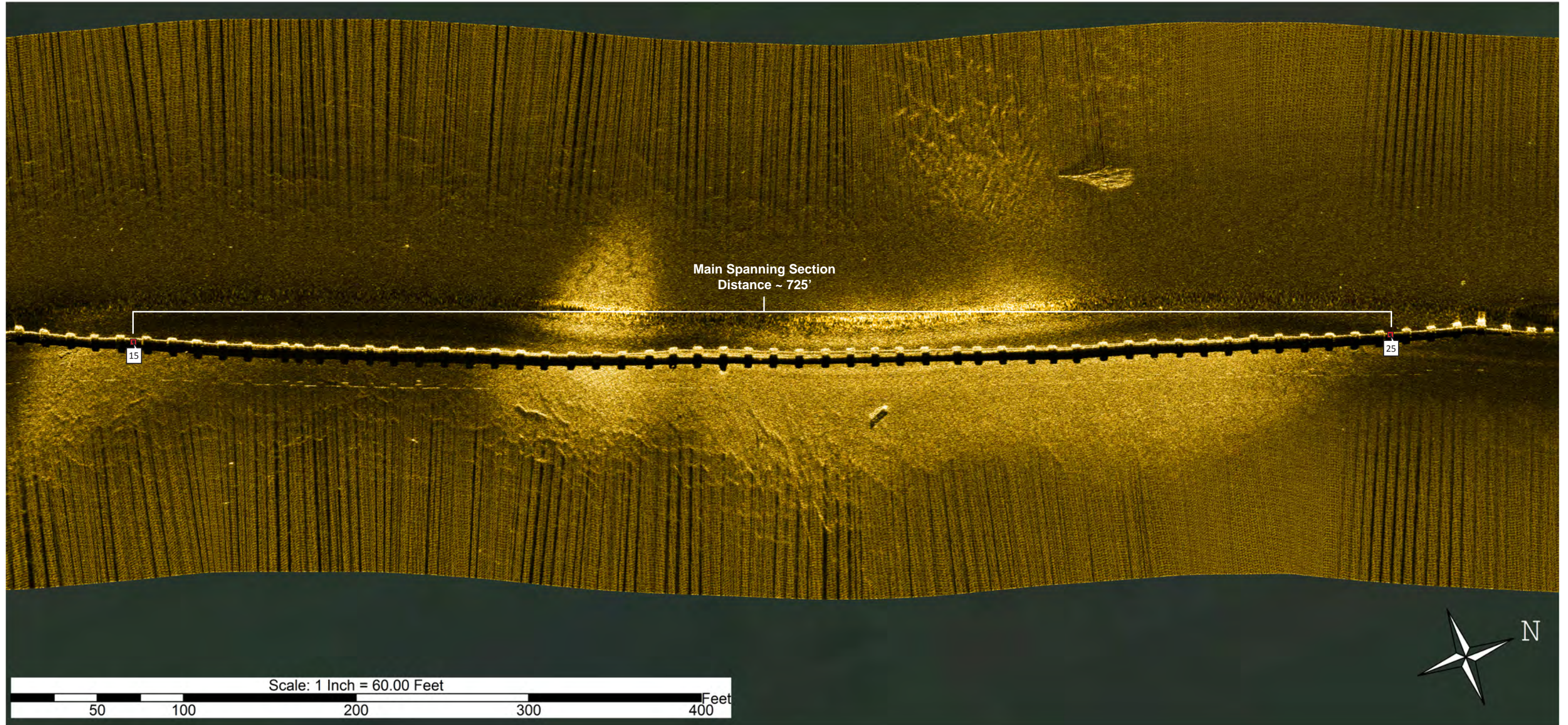
PREPARED FOR:






LEGEND	DEFINITIONS	GEODETIC SETTINGS	PLOT NOTES	CONTROL POINT VERIFICATION	 <b>DEPTH OF COVER STUDY</b> DATE(S): 5/16/2016 - 5/20/2016
	<p><b>DoC</b> - Depth of Cover</p> <p><b>T.O.P.</b> - Top of Pipe (or Cable, Conduit, etc.)</p> <p><b>+VSDV</b> - Positive aspect of vertical confidence level. Represents a 95% likelihood that the true position of the target lies deeper than this point.</p> <p><b>MSDoC*</b> - Minimum Statistical Depth of Cover. This reflects the measured distance from the +VSDV component to the Topo / Bathymetry line.</p>			<p>A CONTROL POINT WAS ESTABLISHED AND REFERENCED BY DoC MAPPING TO ADJUST FOR HORIZONTAL AND VERTICAL VARIANCE DURING THE TIME OF THIS SURVEY. INFORMATION FOR THE CONTROL POINT(S) BELOW:</p> <p>ID - OP-FORD            E - 13334901.9            N - 261035.442            EL - 690.494</p> <p>PLEASE REFER TO "APPENDIX A - CONTROL POINT VERIFICATION SHEET" FOR MORE DETAILS ON THE CONTROL POINT(S) AND DoC MAPPING'S OBSERVATIONS.</p>	





LEGEND	DEFINITIONS	GEODETIC SETTINGS	PLOT NOTES	CONTROL POINT VERIFICATION	 <b>DEPTH OF COVER STUDY</b> DATE(S): 5/16/2016 - 5/20/2016
	<p><b>DoC</b> - Depth of Cover</p> <p><b>T.O.P.</b> - Top of Pipe (or Cable, Conduit, etc.)</p> <p><b>+VSDV</b> - Positive aspect of vertical confidence level. Represents a 95% likelihood that the true position of the target lies deeper than this point.</p> <p><b>MSDoC*</b> - Minimum Statistical Depth of Cover. This reflects the measured distance from the +VSDV component to the Topo / Bathymetry line.</p>			<p>A CONTROL POINT WAS ESTABLISHED AND REFERENCED BY DoC MAPPING TO ADJUST FOR HORIZONTAL AND VERTICAL VARIANCE DURING THE TIME OF THIS SURVEY. INFORMATION FOR THE CONTROL POINT(S) BELOW:</p> <p>ID - OP-FORD            E - 13334901.9            N - 261035.442            EL - 690.494</p> <p>PLEASE REFER TO "APPENDIX A - CONTROL POINT VERIFICATION SHEET" FOR MORE DETAILS ON THE CONTROL POINT(S) AND DoC MAPPING'S OBSERVATIONS.</p>	